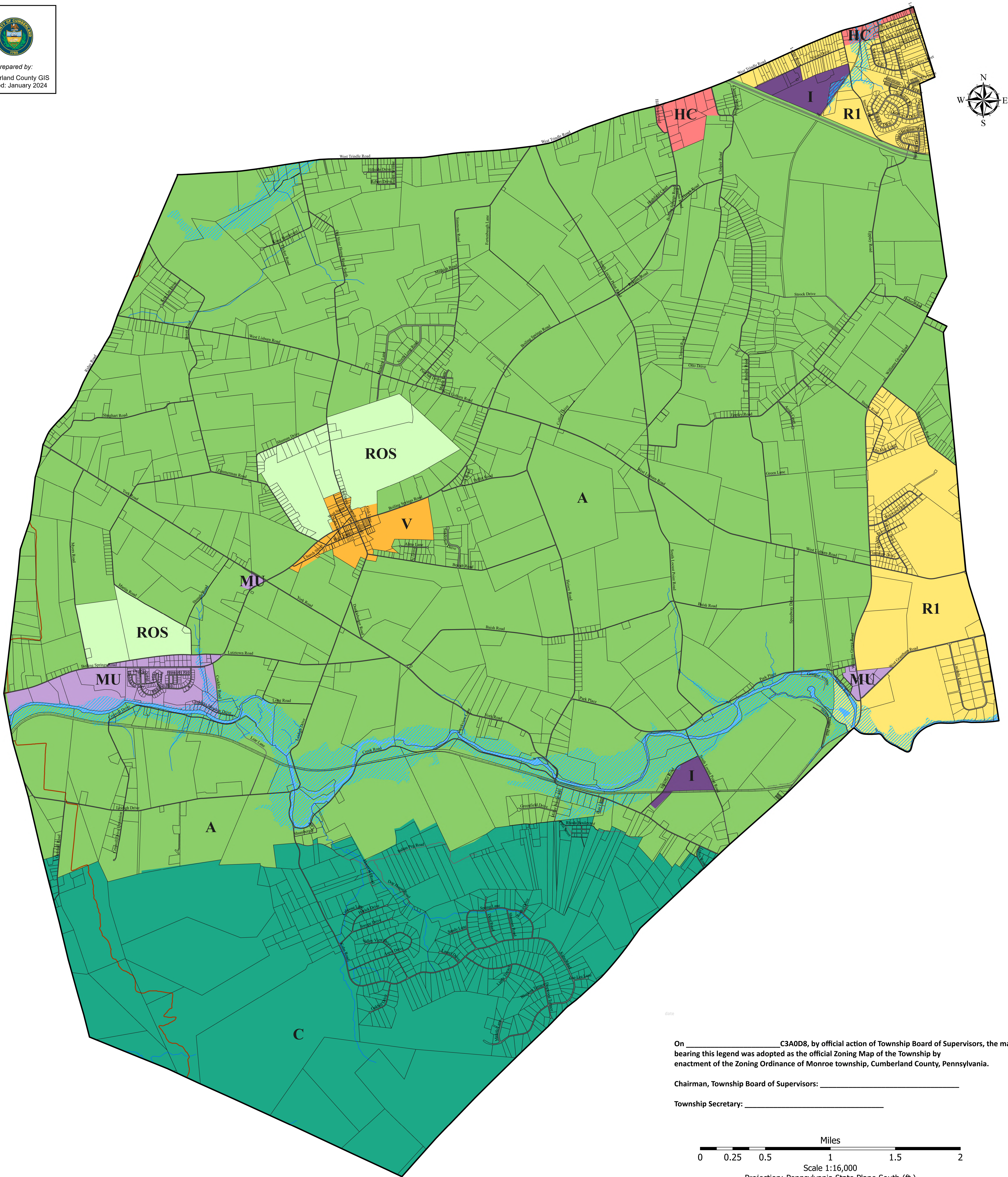
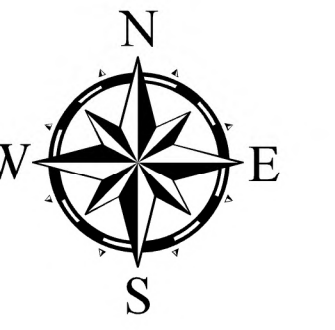




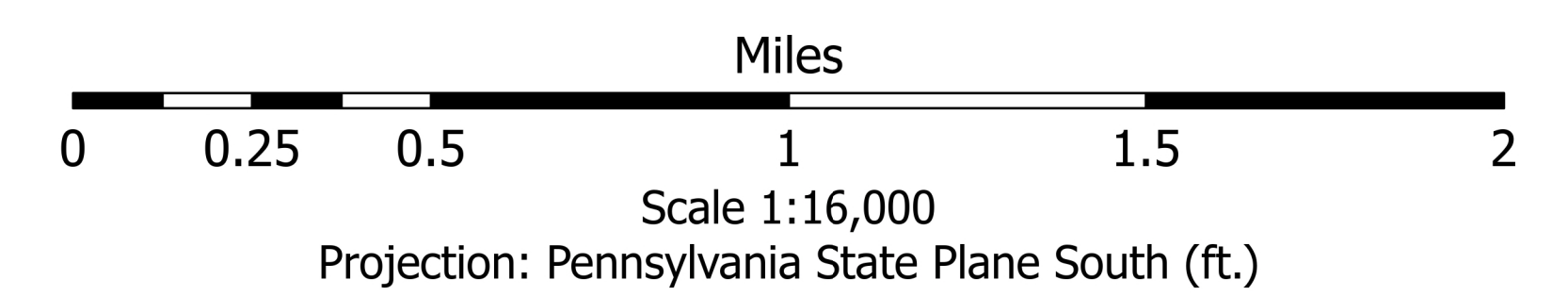
Prepared by:
Cumberland County GIS
Revised: January 2024



On _____ C3A0D8, by official action of Township Board of Supervisors, the map bearing this legend was adopted as the official Zoning Map of the Township by enactment of the Zoning Ordinance of Monroe township, Cumberland County, Pennsylvania.

Chairman, Township Board of Supervisors: _____

Township Secretary: _____



Monroe Township Official Zoning Map 2024

COUNTY DISCLAIMER

This map was digitally compiled for internal maintenance and developmental use by the Cumberland County, Pennsylvania, GIS & Planning Departments to provide an index to parcels and for other reference purposes. Parcel lines do not represent actual field surveys of premises. County of Cumberland, Pennsylvania makes no claims as to the completeness, accuracy or content of any data contained hereon, and makes no representation of any kind, including, but not limited to, the warranties of merchantability or fitness for a particular use, not are any such warranties to be implied or inferred, with respect to the information or data furnished herein.

No part of this document may be reproduced, stored in a retrieval system or transmitted in any form or by any means, electronic, mechanical, photocopying, recording, or otherwise, except as expressly permitted by the County of Cumberland and the Township of Monroe.

Refer to the officially enacted "Monroe Township Zoning Ordinance" for information regarding interpretation of zoning district boundaries, floodplain area boundaries, procedures for requesting amendment to this map, etc.

Reference

- Municipal Boundary
- Real Estate Property
- Appalachian Trail
- Railroad
- Roadway
- Creek/Stream

Overlay District

- Floodplain Zone

Zoning District

- Suburban Residential (R1)
- Village (V)
- Highway Commercial (HC)
- Neighborhood Commercial (NC)
- Industrial (I)
- Agricultural (A)
- Conservation (C)
- Mixed Use (MU)
- Residential Open Space (ROS)